



the society of layerists in multi-media

"...the relationships in art are not necessarily ones of outward form, but are founded on inner sympathy of meaning."--Wassily Kandinsky

Table of Contents:

President's Letter
Good News-Donations
Newest members
Regional News

Member News
Circle of Prayer
Important Updates
Officers/Staff

Message from the President

The SLMM Premise is more relevant now than ever before – we see in real time that everything is connected. As we watch the news on our television screens and see the world map fill in with cases of the Coronaviris-19, it is a very scary sight indeed. Humans relating to one another is an ongoing everyday event. We understand that we are all in this together and no one is exempt from this pandemic. What is being experienced by people around the world, we are experiencing here at home in our country, and vice versa. The sadness and fear that others are feeling, we are feeling as well. We are reaching outside of ourselves for comfort, hope, and love. The willingness of those coming to the aid of others in time of need renews our faith in our fellow man. Even nature is stepping up with its continued cycle of renewal as people spend more time indoors and lessen the impact we have on it.

Physical, mental, spiritual. This is the holistic concept. The experience of living and learning through these difficult times will bury itself deep within our subconscious. It will affect who we are as individuals and as artists on every level of our being. It seems the Universe is putting us into a 'time-out' to pause and reflect upon these relationships – within ourselves, with others, and with our environment as well. There is much to be accomplished through this opportunity. We can learn, we can heal, we can grow and become better people, better artists. When we see the trees in bloom, feel the warmth of the sun, and hear the birds sing, it is difficult not to smile and feel a bit of comfort in the thought that 'this too shall pass'. As artists, it gives us more time to create in our studio and express the story or message that is within each of us to be told in a visual, written, musical form, or performance. These can be important to the healing of the world.

The social distancing and self-isolating that we are practicing compels us to use different methods of connecting and communicating with one another. The most obvious and instant way of doing this is through technology – the use of the internet through emails, texts, videos, blogs, Facebook, Instagram, websites, and other platforms. This may be the perfect opportunity for SLMM to become more familiar with all of these options. Doing so can help carry us into the future as we try to improve our communication and connection with each other, and especially with those members around the country who are isolated. All of us now have a better understanding of how these artists feel as we distance ourselves from those who live in close proximity to us, and we see the importance of reaching out to each other to stay connected.

Due to the pandemic and the uncertainty of its effect on the near future, our Board of Directors has decided to forgo a national conference this year and will instead plan to hold the next event in the spring of 2021. This will



possibly be in Minneapolis where we can meet our website administrator, Susan Dreiling, and have her speak to our group about how we can better utilize this forum and answer any questions we may have. Watch for more info. Until then, please try to more actively use our SLMM website and Facebook page – check in with other artists to see what they are doing and share your news as well. Stay healthy, happy and connected!

Laura Pope, SLMM President

Donations and Gifting

Jaleh & Galen Etemad Donation



Jaleh and her husband Galen bequeathed SLMM with a \$5000 contribution to provide unrestricted support...for the second year in a row! Inspired by the Etemad's generosity, a new feature will be added to the SLMM website to give all viewers the ability to make donations to SLMM throughout the year that will include a list of donors. It is a great opportunity to help SLMM and to make a tax deductible contribution.

A testimonial from Barbara Jo Stevens, a SLMM member, illustrates how much this gift means.

SPECIAL THANKS to Mr. and Mrs. Etemad for their generous support of the arts and SLMM! This organization with its opportunities (web shows, national shows, local gatherings) and WONDERFUL ARTISTS has totally changed my life! I have met some incredible people who have reached across the miles to offer support and encouragement. The local Hays, KS SLMM group offers me a chance to meet with like-minded artists on a regular basis to share ideas and art and experience, and of course, support! This is a special group and I know that the generous contribution by the Etemads' will be put to good use and offer artists across the nation more wonderful opportunities, connections and support! Thank you so much.

Barbara J. C. Stevens

Surprise Gift

In February, Karen Van Hooser, SLMM's Executive Administrator, reported an unexpected surprise. SLMM received two checks from an organization called "Network for Good" totaling \$224 in anonymous contributions through our new Facebook social media. "I have no way of thanking these generous benefactors but if by chance you are one of them please accept my appreciation on behalf of SLMM! As your art organization, you can rely on SLMM to use these funds to benefit all members in the most efficient way."

Karen goes on to say, "As you know, your membership dues are used to maintain our annual operating budget, which includes the continual improvement of our website and infrastructure. It's what keeps us alive! Additional funds through donations will give us the flexibility to supplement our Regional and National Art Exhibitions. We can also use these funds to promote art education on a regional, national, and local level in the form of workshops and lectures."

Susan Dreiling, Website Designer & Web Gallery Administrator, will soon have links on our website making online PayPal donations more convenient. SLMM is a 501(c)(3) non-profit organization so, not only are contributions welcome, they are non-taxable!

Rebel Mahieu is our pick for this issue's NEW MEMBER SPOTLIGHT



As your newsletter editor, I have picked Rebel Mahieu who lives and works in western Kansas. I can personally say she is a firecracker and will make an excellent SLMM member. Her enthusiasm for our organization has resulted in her recruiting two new members from Colby. Rebel found SLMM through connecting with a former teacher & SLMM member, Barbara Jo Stevens pictured to the right of Rebel. By the way, Barbara is responsible for at least 9 new members and counting! I am very excited to watch our area SLMM group grow because of people like Rebel and Barbara Jo.



In Rebel's own words, I don't read books as much as I used to, and when I do sit down to read a book that I like, I will binge read and finish reluctantly in a couple of days—and be very disappointed that it is all over. I have the same feeling when I am head over heels, paint smeared fingers, no understanding of time, completely absorbed in expressing what is in my mind, using various layers of meaning to complete a composition. To finish a composition in one pure straight material is a very rare occurrence in my playbook. Repetitive work bores me quickly, therefore, I have a very childlike desire when creating to experiment with materials and combinations to

further the desire to create and be able to complete the personal growth process.

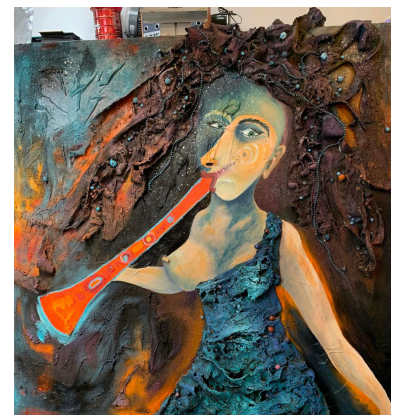
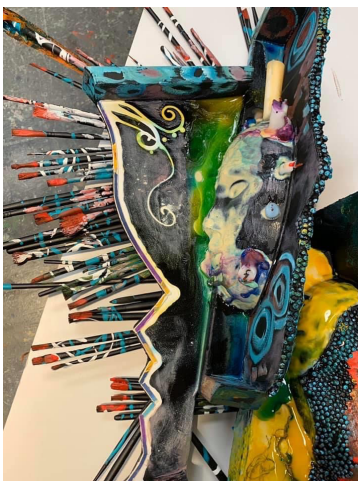
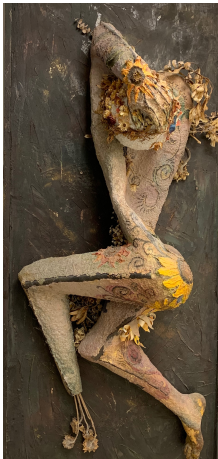
I love texture! I remember as a child touching the various fabrics in a clothes or fabric store, or putting something in my mouth just to see if whatever it was had a particular flavor or tactile sensation. Sometimes it was gross!

In my art, I love using texture and layers to create meaning. Sometimes it may take a few years for me to understand just what the meaning was, but it is always a true expression of myself.

For the last 12 years I have been teaching art at Colby Community College, Colby, Kansas. I love my job! I get to work with wonderful young minds that in their curiosity to learn also fuels my desire to create. Learning is fluid and with openness, should not only be lifelong, but non-selective.

When asked, what is your favorite medium? My response will always be "all of them. How can you choose just one?"

I am excited to be a member of SLMM, an organization focusing on meaning in layers and open to all mediums (It is the first organization of its kind for me since 4-H). It is great to meet and work with artists outside of my area and to learn from all of you.



Welcome 8 New Members

Sicily Cruse - Great Bend, KS, Deep South/South Central
German Hernandez - Colby, KS, Deep South/South Central
Rebel Mahieu - Colby, KS, Deep South/South Central
Pam McKinnie - Olympia, WA, Pacific Coast/Canada

Valerie Mills - Great Bend, KS, Deep South/South Central
Karen Shaner-Great Bend, KS, Deep South/South Central
Suzanne Schielke, Colby, KS, Deep South/South Central
Bev Simonson - Great Bend, KS, Deep South/South Central

Membership renewal is due annually by the 1st of July. Dues must be current to be eligible to participate in SLMM national and regional exhibitions, national conference, website, web gallery, social media and newsletters. Membership has its privileges!

Regional News

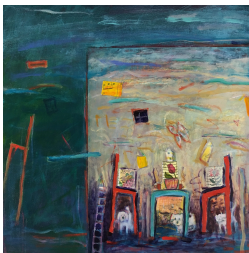
Deep South/South Central Region

In January, Hays area SLMMers were treated to a wonderful watercolor workshop, *Awash in Creativity*, led by Von Pounds, SLMM member from Larned, KS. We met at Cal Mahin's studio in Hays, Kansas. Demos were followed by everyone working on the various methods and techniques. This was Von's first teaching experience but it may not be his last. The group unanimously agreed Von is a born teacher!!



Our local SLMM group from the Hays, Kansas area, had planned an exhibition, "Hidden Stories," at the Deines Cultural Center in Russell for April, 2020. Well, guess what! The gallery has temporarily closed and the show cancelled. To make lemonade out of lemons, we have been offered a virtual exhibition. Shannon, the Director, will organize our digital images on the gallery website and there WILL be a show after all. We will spread the word about SLMM and the work will be seen by a much wider audience than we ever dreamed! The website for the show is <http://deinesculturalcenter.org/index.html> "Hidden Stories" will be available for viewing now through May 15, 2020.

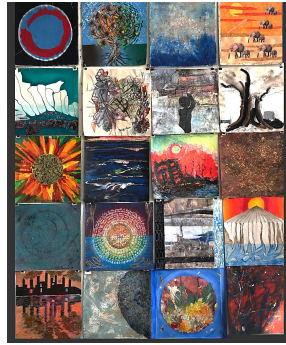
Our little group in western Kansas is now up to 20 members and we expect more growth in the wings. We are a rural location with a hunger to connect. SLMM is just what we need. Thank you, Mary Carroll Nelson, for creating this organization in 1982.



Two of our members were honored to have work chosen for the "Mark 100 Regional", a six-state exhibition at Mark Arts, Wichita, KS, January 3-April 18. Kathleen Kuchar's work, *Tea Party* is on the left, and Von Pounds and his watercolor on the right. Von attended the opening reception.

In March, Rebel Mahieu and Suzanne Schielke exhibited work in the annual "Art on the Oasis" at Colby Community College. Both received awards in painting and mixed media.

Pacific Coast/Canadian Region



Global Warming Project

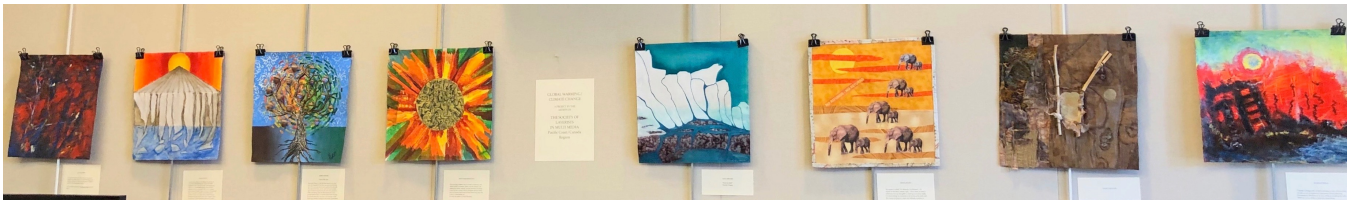
Jenny Badger Sultan, coordinator of the Pacific Coast/Canada Region, organized a project for the members to work on during December and January. She sent out 16"x16" squares of canvas to those SLMM members wishing to participate. People could work with their thoughts and feelings about the topic of Global Warming/Climate Change with their choice of materials. The panels were sent back to Jenny and then ten members met in her studio on February 22nd to see them and hear the statements that people had written about their work. John Fahey had created a

song for the event, "Our House is Burning Down," which he played on his guitar and sang. It gave a vivid accompaniment to the images people had created. It was great to see the work and the variety of expressions and to meet new members. In just a few days, Jaleh Etemad had arranged for us to hang the work at the Tiburon Town Hall, so she, Hank Sultan, and I installed the work on March 9th. The Town Hall had to close a few days later due to the Coronavirus pandemic and we don't know when it will re-open.

The group will have a Fall show at the Unitarian Church in San Francisco and the title for the show is still to be determined. "Beneath the Surface" was suggested but more ideas need to be presented before voting. So Pacific Coast/Canadian members, please think about it and send to me.

May you all stay healthy as we transition into Spring!

Submitted by Jenny Badger Sultan, SLMM Board Member, Coordinator of the Region



Southwest/West/International Region

Albuquerque SLMM members of the Southwest Region started the year at the Albuquerque Museum with a docent tour of the "Jim Henson Exhibition: Imagination Unlimited". This show celebrated the creative vision of Henson and his team who brought to life the popular worlds of the Muppets, Sesame Street, and more. In February, the group enjoyed a gel plate demo and hands-on-session in the home of Lauren Deyo (www.artbydeyo.com), and in March, paper and textile artist Danila Romold (www.danilarumold.com), shared her story, journey, and organic process of her amazing work. The Southwest/ West Regional Exhibit 'Free Floating' is scheduled for October 1-November 30, 2020 at the Albuquerque International Sunport, Albuquerque, NM. Selections for the show will be made by SLMM members Sandra Duran Wilson, Santa Fe (www.sandraduranwilson.com) and Gale Craig, Prescott, AZ (www.galecraig.com).

MEMBER NEWS

Patricia Abraham

Since the first of the year, Patricia had work accepted into four national and international shows. *Metamorphosis* was shown in the "International Fallbrook Exhibition" in Fallbrook, CA. *Rendition in Green* was in the "California Aqueous 2020" in Morro Bay, CA and *Serendipity II* was for the "WAS-H Exhibition" in Houston, TX. *Common Threads IV* was shown in the "Western Federation of Watercolor Societies" in Boise, ID. The Idaho show opens in June. All of the paintings are water media and are pictured in the order mentioned above.

Two of the exhibits have an online catalog of the work in the shows. Click www.fallbrookartcenter.org and then click on SHOW CATALOG. The other online catalog can be seen at www.watercolorhouston.org

Patricia also participated in the SLMM Global Warming project.



Carol Adamec

Since Christmas, Carol has been working 6-8 hours a day in her studio painting new work for a solo exhibit, "In a Japanese Garden," that was scheduled for April at L Ross Gallery in Memphis, TN. A week before she was to pack up her paintings and drive to Memphis, the show was (mutually) cancelled. She is hopeful that it can be held later this year or rescheduled for next spring. "I felt part disappointed and part relief to **not** have a 1,000 mile drive ahead of me and being away from home during this turbulent, unpredictable time."

Pictured is one of the new paintings she completed for the exhibition, *Kimono Swing #2*, 36" x 48".



To help better understand the painting, Carol gives us this information. The word "kimono" means something to wear, so there are many styles of Japanese kimonos for different occasions, seasons, and events. This painting is based on the furisode, a woman's kimono and the fanciest Japanese kimono worn for special events. Traditionally the furisode kimono was worn by young, unmarried women and was made with the finest fabrics, the most lavish designs, and embellished with metallic threads. The word furisode means "swinging sleeves" which vary in length from 15 inches to 3 feet. If a young

woman wished to attract a certain young man's attention, she would coyly swing the long sleeves of her furisode kimono to signal her interest. "Inspired by these factors, I composed this painting to portray the layering of materials and colorful patterning of a furisode, along with the excitement of youthful romantic attraction on a lighthearted, breezy spring day."



Leah Bowers

SLMM would like to help celebrate a new addition to Leah Bowers' family. Madilynn Jo Bowers who arrived on February 27th at 7 pounds and 20 inches. Her mom says Madi is the sweetest thing ever, but in these crazy times with Covid-19, we haven't gotten to share her with many people. Leah is from Lyons, Kansas and the area SLMM group can't wait to meet this beautiful little girl.

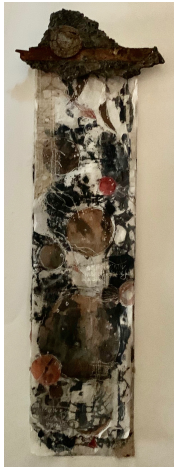
Lynda Burch

From March through May, Lynda has 22 mixed media collage paintings showing in the New Mexico Cancer Center Gallery with A Cause in Albuquerque. Although the attendance was dwarfed by coronavirus, it was still a big honor for Lynda to be selected for that show which also featured another 17 artists. Art was featured throughout the halls where patients are treated daily. The Center receives 40% of the sales from this show.

Lauren Deyo



Lauren reports that she has been making mail art. She creates postcards with paint, collage, stamps and sends to people. Here are two examples.



Nancy Dunaway

Nancy reports that the year has been very productive with some mixed-media printmaking and has participated in several shows through the Society of Arkansas Printmakers, both last fall and this spring. She was included in "Prints and Process" exhibition held in January / February at Quachita Baptist University.



During this quarantine, Nancy has just completed a new piece, a hanging book with some thoughts on what we hopefully will realize or sustain ourselves during this time. *Navigating Uncertainty*, 26"x9", pictured on the left with the top detail next to it. The other three pieces are monoprints, *Written on the Moon*, *Pathways on the Moon*, and *Seeing From Within*. Nancy has used stencils, stitching, and some mixed media in these prints ranging in size from 24"x18" for the moon pieces and 20"x16" for *Seeing From Within*.



Jaleh Etemad

Jaleh is hoping everyone is doing well especially now with all the health concerns around the world. She was instrumental in helping find a place to show a very worthy exhibition, "Global Warming/Climate Change" at the Tiburon Town Hall. It happened that her town of Tiburon was celebrating the 50th Earth Day in the months of March and April and the show was advertised as part of the celebration. Twenty SLMM artists in the Pacific Coast/

Canadian Region participated. Jenny Badger Sultan (Regional Coordinator) and her husband, Henry, worked very hard to organize and arrange this show. **Photos of the "Global Warming/Climate Change" work can be found in the regional section of this newsletter.**

The photo on the top left shows Jaleh with her painting called *Malibu Fires* from her Global Warming Series. *Love Letter* is pictured to the right of Jaleh's studio.



Ann Bellinger Hartley

Ann has a piece in the "National Collage Society 23rd Annual Small Format Exhibition" at the Boyer Gallery, Center for the Arts, the Hill School, Pottstown, PA. She, along with SLMM members Linda Penrod, Kathy Farr and Janet Ruffin, attended "Escape Artists Week" at the Hill Country Arts Foundation, Ingram, TX. It was a whole week of painting in January with friends, lots of good talk, and a little wine in the beautiful Texas Hill Country. Looks like Kathy Farr has a series going and Linda Penrod is too absorbed to look at the camera. Ann's table is waiting her creative touch. But where is Janet? She must have gone to buy more wine.

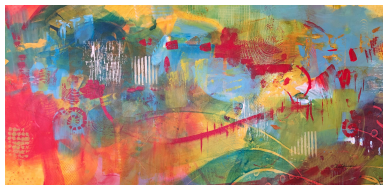


Kathleen Tucker Landreth

Kathleen would like everyone to know that she has written a memoir for her wonderful black cat who crossed the rainbow bridge last fall. It may be viewed at [MixBook.com](https://www.mixbook.com/photo-books/interests/dear-magic-21131961?vk=VCSeBoGquBDwH9l33w6J) using this link: <https://www.mixbook.com/photo-books/interests/dear-magic-21131961?vk=VCSeBoGquBDwH9l33w6J>

She previously wrote a memoir for her beloved cat Clyde, also now deceased and it may also be viewed on [MixBook.com](https://www.mixbook.com/photo-books/interests/dear-clyde-18130645?vk=SYpyYY3ID1MI5MSxEoyT) using this link: <https://www.mixbook.com/photo-books/interests/dear-clyde-18130645?vk=SYpyYY3ID1MI5MSxEoyT>

Vicky Lennon



Vicky prefers to call it "Artist in Residence" rather than sheltered at home. As everyone else, many of her planned exhibits were cancelled, but she does have a painting, *Cooler by the Lake*, hanging at the Foosaner Art Museum in Melbourne, Florida with the Florida Artists Group (FLAG).

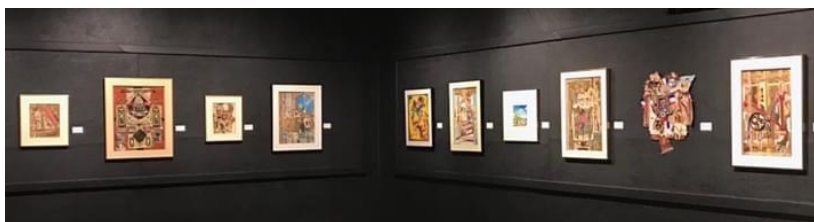
She thanks everyone for the prayers and kind thoughts while John was in intensive care with his stroke. He is home now and doing great much to the surprise of the doctors.



Cal Mahin

Cal exhibited his latest collages in an exhibition called "Moments in Time," in the Founder's Gallery, Hays Art Center, Hays, KS from March 6th to April 3. He was interviewed by **Hays Post** reporter Cristina Janney and had this to say: "It'll be a story. You'll have to be involved in it and the title may give you a little clue." Cal makes his own paper and also alters the paper and has a studio filled with collected and found objects that are incorporated into his work. "I like to manipulate and with collage and found objects, I can move it all around and see it in many different aspects of the composition and then I can finally put it

together. I don't know if they are ever done." The theme of this show is capturing moments in time but Cal says



that the artwork can also change over time. "It can change because certain papers fade in the light. So 10 years from now part of it might be almost faded away and those that remain, dominate in the work. It is kind of alive. It changes, which I find interesting."

Georgia Mason

Georgia reports from her home in North Carolina that these days have been challenging but sweet as it makes us realize how transitory our life is on this beautiful earth. "I am kind of blue that our dear friend Sage Schmutz is packing to move to Santa Fe in May. This has been a longtime dream. I will miss her so much but know that she will be closer to many of you in the southwest. And I can come to Santa Fe to visit her and David."



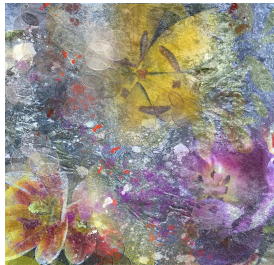
Kind of Blue, a recent painting, was juried into the Georgia Watercolor Society's "2020 National Exhibition" that was hung at Oglethorpe University in Atlanta. Sadly, no one can see this stellar show in person and there was no opening reception. Georgia was honored to get 3rd place award and the entire show is available to see online at <https://www.georgiawatercolorsociety.com/exhibitions/2020-national-exhibition/>

Georgia says that most days she is up to photograph the sunrise and later in the day, she paints. "Yesterday I finished this new painting titled *Out There*. As an intuitive painter, I am always surprised at what comes out on the canvas. I have another already started. Painting and reading books has helped keep my spirits up during these challenging days. Spring greetings and love to you all!"



Pam McKinnie

Pam reports that it is beautiful in Washington with almost every day sunny, temperatures perfect and plants and trees blooming EVERYWHERE. It is a great time for walks and working in the garden.

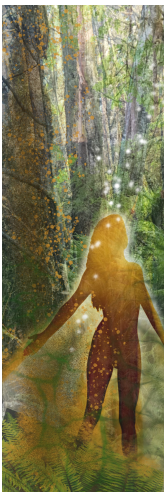


And by staying at home, we are giving Mother Earth a much needed time to rest and heal. The painting is an Easter/Spring painting that has nature/animal images. "As with all my painting there are subconscious images that appear on their own."

About a year ago Andrea Mastrangelo, SLMM member and director of Museum Contempo in Shelton, WA, told Pam about SLMM and that led to her joining this past January. "Now that I am a member, I look forward to getting to know more about the organization and its talented members." Pam showed work in her first Museum Contempo "Fusion IV" show in 2019 and at the "Celebration of Light: Who is God VI" show last December. Due to the current "stay at home" orders, there will be no live event of the "Fusion V Unity in Diversity" show, but it will be a virtual event during

April and May on the Museum Contempo Facebook page <https://www.facebook.com/Museum-Contempo-1524892247756251/>

Pam is one of the curators of the "Fusion V" show as well as a featured artist. The paintings pictured here are a part of the show. From left to right the titles are *Earth Goddess*, *Air Goddess*, *Water Goddess*, *Fire Goddess*.



Angela Muller



A Reminder All Shall Be Well 36x48x1.5

In the midst of life's curious and sometimes harsh ways, Angela turns to English anchoress Julian of Norwich who said, "All shall be well. All shall be well. And all manner of things shall be well." Angela says "To me, the cross symbolizes faith but also a visual reminder of the path we walk, often finding ourselves at a crossroads in difficult times. I chose the color goldenrod to represent glorious sunrises that eventually bring an end to even the darkest night. It has stone texture embedded with wheat harvested from the Tatkenhorst family farm near Natoma, Kansas and is glazed with the fresh ash of Eastern Red Cedar and white prairie sage for purity. I ladened it with organic rust to remind us time is fleeting. May it inspire you to walk confidently in hope and good spirit."

Angela exhibited her piece, *Moonrise Over a Limestone Field*, 30" x 40", in the "Kansas Scenic Byways Invitational" held at the Birger Sandzen Memorial Gallery in Lindsborg, KS from January 19 through March 15. It is Angela's nod to limestone fence posts that dot the prairie land, built by pioneers because there were no trees. The canvas in the work is a 1930's Depression Era flour sack found in a rural antique store. "I used hand-ground Kansas slate, sandstone and burnt wild sage to depict the rugged fields leaving the sack logo as a full moon on a brightly lit night."



Angela is in a group show, "Who Does She Think She Is?" featuring women artists across Kansas to celebrate the suffragette movement. The show is currently at McPherson College and Angela's piece is called *They Promised Her the Moon*, 36"x36". Next Fall, Angela will have a joint exhibition with SLMM artist, Barbara Jo Stevens, at the Birger Sandzen Memorial Gallery.



Shirley Nachtrieb

Shirley has written "Self-imposed Quarantine a Blessing?"

We all live such busy lives as artists, always looking for new inspirations and themes to paint. Deadlines are constantly running into one another. But during this self-imposed quarantine, I find myself thankful that I now have time to get some of the items on my list of things to do accomplished. They're not urgent but they are important in the grand scheme of things an artist must face. *To the left is Shirley making face masks. The website for those wishing to sew and help the medical community by making face masks is <http://weneedmasks.org/sew-a-mask/>*

All my classes and workshops were cancelled last month due to the world-wide pandemic. My solo exhibit I've been looking forward to for over a year was cancelled, too many risks. So, I look to the positive gift life has handed me...time. Time to visit with my friends over the phone, time to clean out a closet or drawers, time to sew face masks for the community, time to catch up on commissions and the list goes on. So, what can I do to inspire you? To show you the blessing of time and perhaps creativity that can come from being self-quarantined?

I'll share a project I'm currently working on. Now, I don't have the picture yet except in my head, but I'll explain it to you and see if you can see it in yours. Picture a branch of flowers in watercolor as the main subject. Now carefully tear them from the paper so that the branch with flowers rests in your hand; this was actually done months ago and put away. Sometimes, you must deconstruct in order to construct. Place it on the table out of

your way. Now work on a background substrate. It may be the same size as the branch or larger. It may be painted with your choice of mediums in the colors you hold in your heart. Put it out there. Where's your stash of painted collage papers? Get them. Lay the collage papers of your favorite colors on the table. Remember your value patterns. Make sure to include in your collage papers, lights, mediums, and darks. Now decide on a composition.

Arrange the collage papers on the substrate, remembering the composition that you selected in your head. Before you adhere them to the substrate, take a digital picture of your design in process. Carefully, lift the branch of torn flowers and place them on top of the collage. Photograph this step as well. Critique it. Are the lights and darks behind the flowers where you need them? If so, lift the flowers off the collage pieces and begin adhering the collage pieces to the substrate using matte gel medium. If not, continue to move the pieces around until you are satisfied. Let the collaged substrate dry completely before adhering the flowers. Cover the collage with wax paper and place a large, heavy book on top of it overnight to keep it flat as it dries.

In the morning, pretend it is your birthday and unveil what you did the day before. Beautiful isn't it? Allow the painting to rest another day or two to completely dry. Put a mat on it. Is it finished? You may continue to carefully embellish with additional collage pieces to integrate the foreground into the background. Some of the collage pieces may even be torn into leaves or more flowers. You may also use watercolor pencils to soften, enhance, or integrate areas.

I used flowers as my subject matter, but you may use whatever suits you. But when paintings become a little stagnant, I like to push myself and think outside the box; I try to come up with something a little on the crazy side. Because at that moment of "spark" I am back to being a child again, creating on the right side of my brain where creativity rules. I ask myself the question "what would happen if." If your subject matter is buildings, birds, or figure painting, see what you can do with a piece that isn't quite working and take a risk. Go ahead; take a chance. The result of my craziness?



The photos show layers of papers, left to right—layer 1, layer 2, layer 3, layer 4—considered for the new constructed painting. I entered the finished collage in an International exhibit. However the show could not be held because of the pandemic.



Mary Carroll Nelson

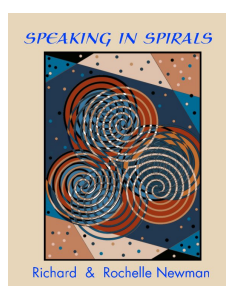
Mary says she is content to be at home. Her favorite activities happen indoors. The solitary confinement of the past month was polka-dotted with painting small pieces for two shows and for family events. A major scam by a hacker on March 4th killed her internet connection and compromised the cell phone. Mary sends healing thoughts to all our members and their families.

The picture of Mary Carroll was shared by Jaleh Etemad as her favorite photo of a great friend.



Richard Newman

Richard is working on a new series of digital paintings using the spiral form as a major creative tool. *Interference Grey* and *LeJazz Hot* are pictured.

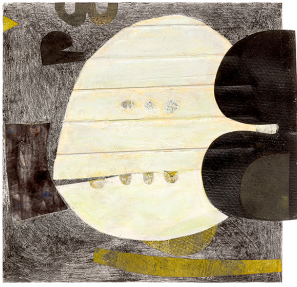


He also has published a new book called "Speaking in Spirals." It is available for preview and /or purchase on the Blurb website.

<https://www.blurb.com/bookstore/invited/8642344/bb96bf31fcf187961f24756323c04e9bd2fb621e>

Nancy Nikkal

Right after Thanksgiving Nancy focused on preparing for an exhibition with Upstream Gallery (Hastings on Hudson, NY), an artist coop at an international fair called “Art on Paper.” She exhibited 8 small works with five other artists in their 12’ x 20’ booth with the opening on March 5-8, 2020 with a VIP preview the opening night. The crowds were huge and positive with lots of interest but not so many sales. She did sell a small work. Here is a link to see two of her works at “Art on Paper”: <https://thepaperfair.com/galleries/upstreamgallery-ny-art-on-paper-ny-2020>. Nancy was thrilled that two of her works were included as the lead images. Last year she learned from experience in the 2019 “Art on Paper” show that it is important to show works that are consistent in media and also consistent in size because the works look better when hung together on the walls. Pictured is *Curvy Geo Overlap*, a mono print with collage and paint, 16”x 20” framed 20”x 25”.



The Coronavirus was already a factor during the show in early March. “I was nervous in advance about showing at the fair and being in a large public space surrounded by large crowds. But, I did participate. The opening night was wall-to-wall people in the aisles and in our booth. I paid attention to who was around me and didn’t shake hands—we elbow-bumped and laughed together. I washed my hands multiple times during each day. After the fair ended, I stayed at home for two weeks to make sure I wasn’t sick. So far so good. When I go out to grocery shop, I wear a cloth mask. I also carry a small cloth I can drench in a 4/1 water/chlorine bleach solution if I have to touch a doorknob, an elevator button, or a shopping cart handle.”

With New York being hit hard by Covid 19, the managing board of her studio called Media Loft in New Rochelle has asked the non-resident artists to work at home, so Nancy has set up a small round table as her new studio in her apartment in Pelham, NY (about a mile from New Rochelle).

Now the Upstream Gallery is closed as are all other non-essential businesses in NY. Nancy is still connected because of emails and links to artists and museums and galleries in NYC and across the country and world. People everywhere are so creative about staying in touch as everyone wants to share information—even if it has to be virtual.

Nancy has been teaching at the Pelham Art Center but it was closed before the winter term ended. She decided to continue class projects and design collage art projects via email. The spring term has been cancelled. “I want students to keep making art because it helps them feel less stressed (that’s what they tell me). All my emails to students (and everyone else) open with: stay safe, stay well, and make time to make art (at home). Art heals.”

Nancy believes it is important, especially at a time like this, to try to learn something new that’s a challenge to your brain. “I worked with my web designer to re-design (and reactivate) a website called **Stuff that Sticks**. I want the site to help students to stay engaged with class projects and their art practice without the benefit of classes with other students at the art center. It took a concentrated effort for me over several weeks with writing, preparing images and learning how to organize and input the information. I am proud I was able to do this because I don’t feel I am a techie.” <http://www.stuffthatsticks.com>.

Not only is Nancy teaching via emails and internet, she is writing a book about the “Art of Collage.” Every day she writes 1000 words for the book. The book focus has changed since the coronavirus pandemic from primarily honoring women who do collages or who work as a collage aesthetic (because men have always gotten more attention than women). The new focus will be about women and RELATIONSHIPS with their art.

Nancy still is writing about women artists at her blog Art of Collage— artofcollage.wordpress.com . “My interview questions include a focus on the important relationships that impact the art practice they have. The book chapters include relationships about family, community, studio, media, identity and more. The list grows daily as I think more and more about how important relationships are.

It’s very exciting for me to finally get so focused. So, I’m doing a lot of writing, emails, and also fit making art into my day. It’s easier to accomplish because I’ve been staying at home alone—but I’m not feeling lonely. “



Laura Pope

SLMM President Laura Pope and her husband, Larry Anderson, met with SLMM member, Sandra Duran Wilson and her husband, Mark Wilson, at Sandra's home studio in Santa Fe. After an enjoyable dinner the night before, the two couples toured the Wilson home studio and caught up on their various experiences. Sandra will be hosting a conversation with Laura, "Facing Fear", in an upcoming blog on her website, www.sandraduranwilson.com.



Jan Sitts

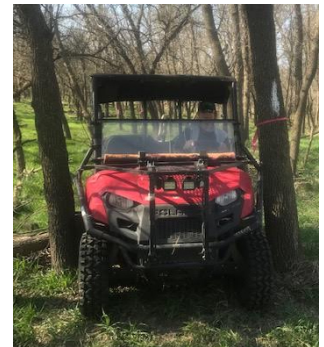
As of January 1st, Jan installed four of her largest (4 feet x 5 feet) paintings at Sotheby's in Sedona, AZ. They will be hanging in their new building on West 89A until next January. "It was a freezing cold day when we loaded Dick's pickup to take them down to hang. Thanks to my wonderful husband who always helps me, I couldn't do it without him."

Check out Jan's many workshops by visiting her website www.jansitts.com

Barbara Jo Stevens

Jo says, "I helped Charlie mark paths in our woods along the river the other day. He had walked the path and marked it with ribbon and wanted me to drive the 4-wheeler along the path so he could put a paint mark on the trees along the path to make it easier to follow. This was on the path. (photo). I suggested that he find an alternate route...I asked him if he had measured the 4-wheeler and he said no, but that it looked plenty big when he was standing between the two trees. I drove through it twice with not one scratch! I was rather impressed!"

This is an analogy for the tight times we are going through. But taking it slow, using all of our abilities, not just the day-to-day abilities we take for granted, we will make it through this hard spot unscathed.



Jenny Badger Sultan

Jenny wasn't sure if this was appropriate for the newsletter, but as your editor at this time of global concerns and Covid-19, I think it is VERY appropriate to share with all our SLMM friends.

Early into "Shelter in Place," we found a note in our mailbox from a young girl in our neighborhood. It had a drawing and the message, "You are not alone." I was so touched that I sent a message back to her and then made this banner for the outside of our house for the neighborhood and any passerby.



Peggy Wambold



Peggy continues to create art and post on Facebook from her home studio in Newton, KS. "Our area SLMM group met to plan an exhibition and the mask project gave us a starting point. This helped give me the courage to try new ideas. Sometimes I feel like my head is in the clouds looking down at my life. I have shared parts of my life in this mask project. I hope you will look for the farm field, big skies over Kansas and find some of my *Hidden Stories*."

Juliet Wood



As your editor, I want to share with you a conversation via email between Juliet Wood and one of her art collectors. **It is very touching and a powerful reminder of the impact art has on all of our lives.**

The vision is one of Juliet Wood's finest creations. It is wood, found objects, printed and painted and is 28"x29". It has a story for us. Although it was painted at the time of the millennium, its story holds true today. In Juliet's words, "*The vision was made while remembering THE most important vision of this millennium, our sphere, our home, our Earth. Our vision needs to include the benevolence that supports the Earth, that motivates conscious compassion, that grants healing interior and exterior, an expansive vision big enough to include all things. A vision that celebrates ourselves and all life as valued and cherished.*"

The story takes on added meaning as we learn a little more about this special painting. Juliet was recently contacted by Ann Pope who purchased this painting and wanted to learn more about its history. [Ann wrote in an email](#), "*We are so grateful for*

the beautiful painting. It hangs over our living room mantel where we have the pleasure of viewing it often as we move through our home. Truly a vision of hope in these times. I only remember parts of the story you told me about painting it for a United Nations gathering in San Francisco so I'm wondering if you would be willing to write the story for me so I can share it with my sons who will someday have the gift of inheriting the painting?"

Juliet replied, *THE VISION* was finished shortly before I was asked if it could be taken to Auschwitz for a memorial. I have no first-hand knowledge of this profound of events. I was just honored to have a work that seemingly acknowledged some of the pathos of that memorial. Shortly after it came back to California, it was included in the 50th anniversary celebration for the United Nations in San Francisco. I did have a chance to attend some of the powerful events of this anniversary. I remember sitting in a darkened auditorium with an event that centered around reconciliation or atonement. Members or family members who had perpetrated atrocities met face to face with the survivors or other survivors. Of course, all who participated did so voluntarily.

One meeting was with a young girl who had survived while the rest of her family were shot before her. She met face to face with the son of an SS Nazi officer. The interaction took place with remarkable facilitators. People seemed to be holding their breath it was so silent. Sometimes only the stories were exchanged, and other times the acknowledgment had a voice.

For me, it is the Earth that also needs this atonement in the largest sense. We seem to be poised in silence waiting for the cacophony of word and action. By what means do we begin to talk about the degradation of air, soil, water, forests, ocean, genocide, species extinction, abuse in every form?

The work is painted within the form of an arc. It is within the arc of our life that we meet the conversations and miracles of the world.

May the words have wings and bear us along with new vision.

Juliet Wood

The following is Ann's response to Juliet's email dated April 10, 2020. *As I read your response, what surfaced in me is a feeling of being in awe of how sometimes in a moment of reaching out one is given a gift. Your taking the time to write me of the story of your painting is one of those moments of gift and I am grateful.*

I remember when I first saw the painting. You were having an open studio at your home in Ross. As I stood in front of the picture I found myself with tears on my face. I was so surprised by the depth of feeling that I had no words for. I shared my response with you and asked if the painting was for sale. My memory is that you hadn't intended to sell it but you agreed to do so. I went home and asked my husband to come see it.

With heartfelt gratitude for your gift of sharing the painting and its story with us. We know it will always have a place in our family as the years unfold for it is a symbol of hope's transformation within us and in our world.

Warm regards, Ann and John



Diana Wong

Diana had a solo show, "Heaven, Earth and Us" in October, 2019, at the Helms Design Center in Los Angeles. On the left is *Simultaneous Horizon*. She has created small sculptures in a series called "Cupcakes 2020." They are made from dry scraps of artist color.

Circle of Prayer

Let us offer a prayer for members who have passed and those going through difficult challenges.

There are so many storms, fires, and other natural disasters that we continually offer prayers for those SLMM members affected. We also offer prayers for all who are affected by Covid-19.

Kitty O'Meara wrote this poem that is so appropriate to keep us grounded and hopeful for a brighter, better future. Jana Donaldson from the Pacific Coast/Canadian Region shared it with us as we all face COVID-19 in our country. As Janaia says, this is an opportunity, an unexpected gift in this time, to deepen our inner lives.

*And the people stayed home.
And read books, and listened, and rested, and exercised,
and made art, and played games,
and learned new ways of being,
and were still.*

*And listened more deeply.
Some meditated, some prayed, some danced.
Some met their shadows.
And the people began to think differently.*

*And the people healed.
And, in the absence of people living in ignorant, dangerous,
mindless, and heartless ways, the earth began to heal.*

*And when the danger passed, and the people joined together again.
They grieved their losses, and made new choices, and dreamed new images,
and created new ways to live and heal the earth fully,
as they had been healed.*

~Kitty O'Meara

As your editor, I wanted to learn more about Kitty O'Meara so I googled and found a lot of information . I settled on Oprah's website. OprahMag.com When Oprah saw this poem, she had to learn more about the author. Oprah got answers by a virtual interview with Kitty in her home outside Madison, WI which she shares with her five rescue dogs and her husband, Phillip. O'Meara is a retired former teacher and chaplain. The poem was written in one sitting, the byproduct of months of built-up anxiety while watching the pandemic brew on the news. O'Meara was getting sad as she felt there was nothing she could do and she was getting worried for her friends. Her husband said: "Write, Just write again." So she did. She shared this poem with her friends on Facebook and the poem resonated with people instantly. Within three days of posting, the poem had gone viral. Since going viral, O'Meara has been flooded with letters , messages, texts from fans around the globe. Quoting from the interview, "Write, that's what you do. So that's what I'll do. I'll keep writing. We have gifts. It's a good reminder that whatever gift is, and however small it is, keep using it. This is a really good time for that." O'Meara gives us this added wisdom, "We can wallow where we are or we can see the invitations. Anything that you can tap into that allows your feelings to be expressed creatively will do that for you. You will feel better on the other end of it. You will be changed." O'Meara encourages her new fans to activate their own creative sides.

IMPORTANT information

President Laura Pope wants us all to be aware of the following items of business.

Board positions to be filled

[Voting ballots will be distributed to our national membership in May for filling two board member positions.](#)

The affairs of SLMM are managed by its Board of Directors making this a very important position. We are always in need of qualified and motivated volunteers to serve our organization in our effort to continue moving forward in the future. This year, we have two nominees who have volunteered to serve along the side of the current panel consisting of Laura Pope, Board President; Terri MacDonald, Board Treasurer; Jenny Badger Sultan; Gale Craig; and Kathy Farr. The nominations for the two board positions are **Barbara Jo Stevens**, Downs, Kansas (stevensbjc@gmail.com) and **Jean Warren**, Bodega Bay, CA (jean@jeanwarren.com) to serve the term 2020-2023. Both of these talented artists are very qualified for the job and we look forward to working with them! *If you would like to submit a name for the board to consider, please do so by May 10, 2020 through laura@lpopart.com*

Dues Increase

SLMM has not had an increase in dues since July 1, 2009. The executive board met in St. Louis, October 8, 2019, and voted to increase the Individual membership fees from \$40 to \$50 and Dual memberships from \$55 to \$75. These increased fees go into effect July 1, 2020.

Website Improvements

SLMM Board of Directors recently approved some very exciting updates to the website! Susan Dreiling, our Website Administrator, has been diligent in implementing these new changes and the first phase has been completed. Please login and explore!

Membership Renewals

Members will soon be able to renew their memberships on the website by using PayPal. If you still choose to pay your dues by check, you will continue to receive the renewal form via email to complete and mail in with your payment. Keep watch on the homepage of the SLMM website and click on 'news'.

Tax Deductible Contributions Members and viewers will soon have the option of making tax deductible donations to SLMM right on the website. These contributions will be vital in expanding art education within our communities. Again, keep checking the homepage on the SLMM website for updates.

National and Regional Exhibitions We will continue to add both regional and national exhibits to the website, as well as update our web gallery every few months. As always, feedback and suggestions are welcome! Susan has the "Do You See the Arch?" show on the website under 'exhibitions' under the 'news' tab. Please don't hesitate to reach out to Karen (karensyh@gmail.com) or Susan (susya.dreiling@gmail.com).



Update on Susan Dreiling and family

Look how Penelope has grown since the last newsletter! She brings great joy to Susan and Johnny. Susan is keeping very busy with her regular job plus being our fantastic, well-organized, and efficient **Website Designer and Administrator**. We all have to agree, Susan is the best!! She does an outstanding job in keeping our website relevant and well designed.

Board of Directors

Laura Pope, President
Terri MacDonald, Treasurer
Gale Craig
Kathy Farr
Jenny Badger Sultan

ex Officio

Mary Carroll Nelson, founder
Alexander Nepote, past president
Richard Newman, past president
Nancy Dunaway, past president
Nina Mihm, past president
Jaleh Etemad, past president

Staff

Executive Administrator: Karen Van Hooser
Newsletter Editor: Kathleen Kuchar
Website Design & Administrator: Susan Dreiling

Regional Coordinators

Deep South/South Central
Kathy Farr

Northeast/Midwest
Open

Pacific Coast/Canada
Jenny Badger Sultan

Southwest/West/International
Open/Win Ratz

SLMM Mentors

Win Ratz, Committee Chair
Marilyn Christenson
Kathleen Kuchar
Nina Mihm
Lynn Mikami
Nancy Ego Nikkal
Mary Wilbanks
Suzan Kraus, digital imaging

Newsletter Editor. Please submit any inclusions directly to Kathleen Kuchar, Newsletter Editor, at kakuchar@hotmail.com. Newsletters are published two times a year, April and October at which time they will be emailed to all members. Hard copies can be mailed at \$10 but always free when found on the SLMM website.
The deadline for the Fall Newsletter is October 15th, 2020.

Membership Roster is published once a year in September at which time it will be emailed to all members. Hard copies can be post mailed for an additional fee of \$10. The membership renewal notices will be sent via email in May with a deadline to renew of July 1st. The membership term runs from July 1st through June 30th of the following year. Any updates to your contact informations should be sent directly to Karen Van Hooser, Executive Administrator, at karensvh@gmail.com

Membership Application

SLMM is a 501(c)(3) non-profit organization incorporated in the state of New Mexico in May 1982. Annual dues are \$50.00 for Individuals, additional \$25.00 for spouse/mate. The membership term begins July 1st and ends June 30th of the following year. Karen Van Hooser, Executive Administrator, will send an application form by request. Her email is karensvh@gmail.com. Completed application and dues should be mailed to SLMM, PO Box 897, Guthrie, OK 73044. You will soon have the opportunity to renew from the website using PayPal.

Reminders and information

Artist Link or Artists Page. Susan Dreiling is the person you need to contact when submitting work for your Artist Link or Artists Page. She reminds us that it is free to have an Artist Link that gives your name and contact information and one photo of an artwork plus an optional short statement. If you want an Artists Page, it will allow more information on the website such as additional photos, a resume, etc. This will cost a one-time fee of \$60 payable through PayPal on the website. To get the ball rolling, here is Susan's email: susya.dreiling@gmail.com

Facebook. SLMM has now launched a Facebook page where members can connect with other members.
Website. www.slmm.org Check it often as it is our way of keeping in touch.

This last page is reserved for your editor to share some *rambling* thoughts.

I need to vent, especially since my computer is getting old. I am getting old. The program I use to create this newsletter is getting old. We are just plain getting old. I thought I had lost the final draft of the newsletter and I just got off the phone with Apple Support. Thank goodness the fellow was able to help me retrieve this newsletter so I could put on the final touches. He did suggest I might be thinking of a new computer!

I wanted to let you all know how much you mean to me as fellow SLMM members. Your correspondence has been so warm and caring. I wish we lived closer together so we could see each other often. Our national conferences are great but there are big gaps when we don't see each other and I miss that.

Some of my friends in Kansas are coming up with some ideas for better connections. We are going to start out small and see where it leads us. If it works, I believe we can do some of these projects on a grand scale. The first project has been suggested by Rebel Mahieu and Barbara Jo Stevens.

Barbara Jo Stevens and Rebel Mahieu have come up with an intriguing project. Barbara Jo sent me an enthusiastic text saying she just learned how to use ZOOM. "Rebel taught me how to do this and it was so much fun to see her! She was in teacher mode and showed me a bunch of stuff. So now I have to see if I can remember it! The whole thing started as she had an awesome idea and I added my two cents worth. Since she is a new member and really doesn't know many in our group, she thought we should have a zoom meeting and put all our names in a hat and have the person with the hat draw out two names. Those two people would then need to get together (phone, messenger, text, zoom, etc) and get to know each other. THEN she suggested that each of those two people do a portrait of the other person based on the information they gathered about that person. Then I suggested that each person ALSO do a SELF-PORTRAIT and the paintings of the same person should hang side-by-side to see how they each perceive the other person and themselves! I don't know where we would hang them, but it sounds like fun and a great way to get to know the other members. What do you think? A fun quarantine project???"

We will let you know how this whole thing works out.

I remember a few years ago SLMM had a project that was really fun to do. I exchanged collage items with a member from Ohio. We created collages from the other person's materials. We corresponded and got to know each other that way. I believe quite a few of our members participated in this collage exchange.

So, members, let's get our thinking caps on and come up with some ideas that can connect us nationwide.

One more thing before I sign off on this newsletter, **I am hoping someone steps up to take on the regional coordinator position in the Northeast/Midwest.** We need a voice for that region to help build the membership or at least, just be there as a person who encourages and promotes our SLMM organization. It is a wonderful way to get to know your regional members and to actively become involved in this wonderful group that Mary Carroll Nelson founded in 1982. Contact Laura Pope, our president, by sending her an email lpopeart@comcast.net

Until the next newsletter, may you all stay safe, be healthy and make art!

Kathleen Kuchar, editor
kakuchar@hotmail.com